

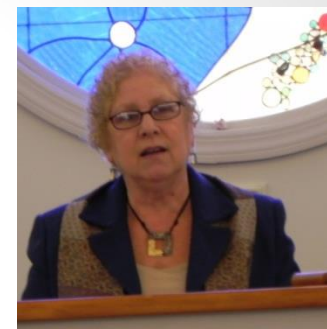
*First Unitarian
Universalist Church
of Indiana*



**Inspire, Care, & Act
Together!**



Worship & Music



- Rev. Joan preaches 3 out of 4 Sundays with congregational volunteer Worship Associates
- Invited guest speakers on relevant topics
- Continued collaborative relationship with IUP Music Dept.
- Choir Directors: Jenna Hyatt and Mitch Matthews
- Musical variety including use of media equipment



Audio-Video-Sound System

- Review of funding:
 - Endowment Distribution - \$4,535.00
 - OMD Chalice Lighter Grant - \$3,053.25
 - First UU Church Contribution - \$198.23
- Provides:
 - Sunday service enhancements: Visually & Musically
 - Recorded First UU “Greatest Hits” - Lori Rittle & Matt Baumer, pianists; Corbin Krug, sound booth
 - Use in Memorial Services & Wedding Celebrations
 - Saturday Night at the Movies Fall, Winter, & Spring
 - Future uses to include satellite congregations of First UU



Religious Education

- **Hired Director of Religious Education: PENNY VICK**
 - **New Curriculum: Spirit Play, Spirit of Adventure, & Traditions with a Wink**
- **Sunday Evening Youth Group for Junior and Senior High School Students**
- **9 Volunteer teachers from our congregation to serve 28 RE STUDENTS**
- **Adult RE: UU101 classes; 12 Steps to Compassion; Monthly Book Club**
- **IUP Campus Group with Rev. Joan**



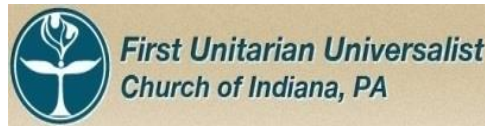
Building & Grounds

Arts & Aesthetics

- **Building and Grounds:**
 - **Outdoor –**
 - Gardens, lawn, trees, and shrubs maintained through member/friends volunteerism and paid lawn mowing & snow removal
 - **Indoor –**
 - Sanctuary, foyer, and hallway freshly painted.
 - Installation of artwork and bulletin boards after being refurbished
 - Entrance rug purchased
 - Sanctuary rug professionally cleaned
 - RE rooms painted; repurposed and painted furniture
 - Purchased a dozen of comfortable folding chairs for use in “Teen Cabin”

Membership: Public Relations

- 70 members, 28 friends, and 8 IUP students
- Volunteer Sunday Service Greeters
- Downtown Every Second Dining Out
- Tuesday Night Dining at Ruby Tuesdays Oct., Nov., & Dec.
- Saturday Night at the Movies
- Website updated regularly
- News Releases for Indiana Gazette
- Indiana Free Library (IFL) continues to display the First UU Logo on 24/7 sponsor board
- First UU Equal Exchange Exhibit at IFL “Night in the Stacks”
- We are a member of the Indiana County Tourist Bureau
- We are a member of the Indiana County Chamber of Commerce



Membership: Caring for each other!

- Freezer continues to store food for home visits
- Visits, food, and other household help provided to members in need
- Happy Birthday Cards & Cards of Concern on-going
- On-going distribution from the Minister's Discretionary Aid Fund



Visibility and Member/Friends Community-Wide Involvement

Listed below are just a partial list of our congregation members' activities incorporating their First UU Principles!

- **Indiana Cares Campaign**
- **Center for Community Growth**
- **Indiana Free Library**
- **Community Music Ensembles; Community Music School**
- **Indiana Community Garden**
- **IUP Interfaith Council**
- **Local LGBTQIA**
- **Democratic Women**
- **League of Women Voters**
- **Local Indiana Borough Council Leaders**
- **4-Footed Friends**
- **Indiana County Humane Society**

Social Justice & Community Involvement

- First Church LGBT Wedding in Indiana County
- Food For Mind and Spirit
- Monthly Give-A-Way The Plate
- Youth Group: We love animals!
- Garden project sustained for another year



Give away the plate

\$ 994.60 collected 1/1/14 – 10/5/14



February – ICCAP Power Pack

March – Alice Paul House



April – Evergreen Conservancy



May – Family Promise



June – Camp Orenda



October – LGBT Film Festival



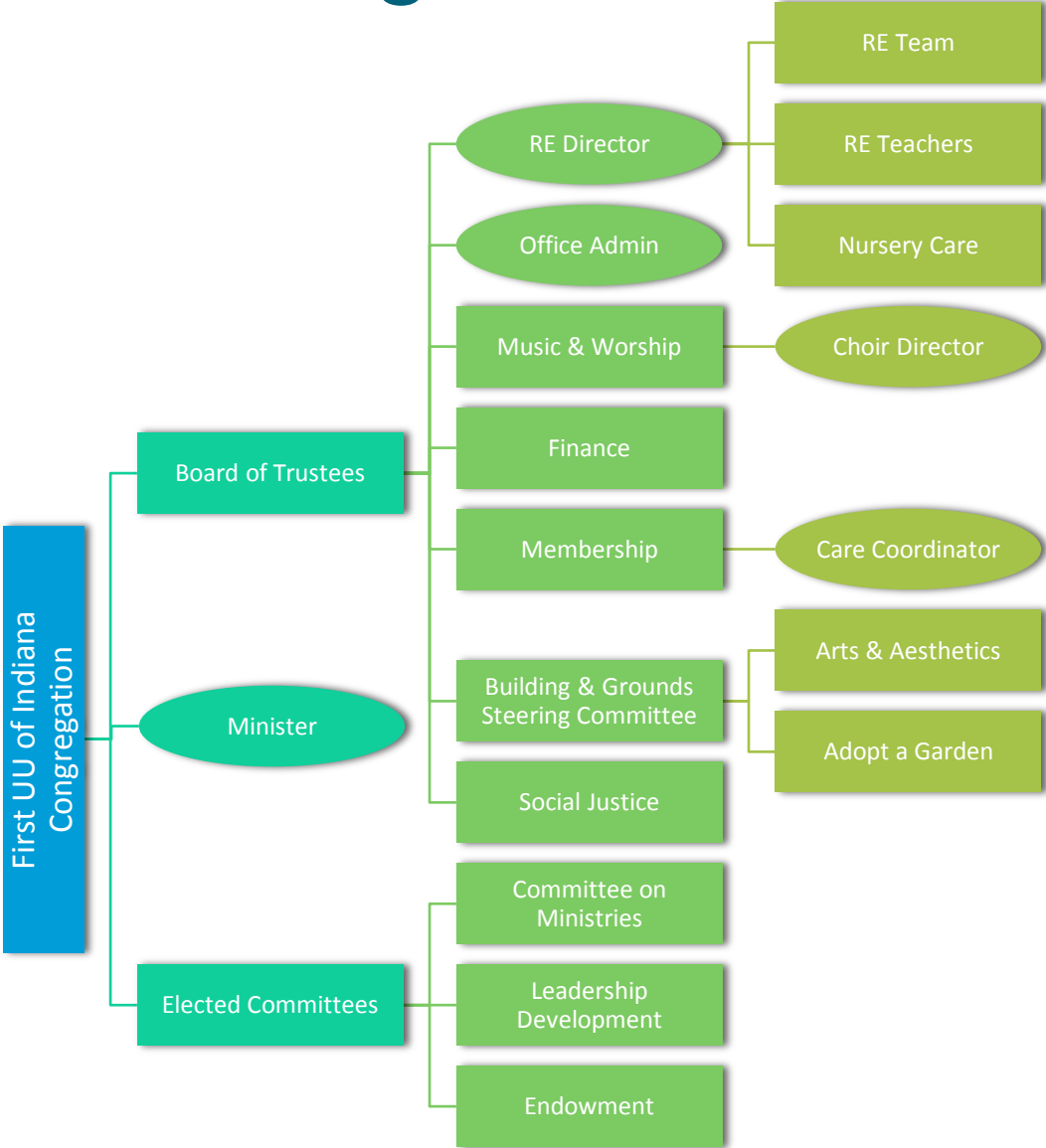


Ministry

- **First UU:**
- Sunday Services
- Developed Worship Associate Program
- Originated and continue IUP student choir directors
- Assisted with Ad-Hoc RE Committee to hire DRE
- Memorial Services to members and community
- Wedding for members and community
- **Indiana, IUP, and the Mission of the Larger UU Movement:**
- Represented First UU at the PA House of Representatives with the "Opening Prayer"
- President of the IUP Interfaith Council
- IUP Campus Healing Garden
- Indiana-Armstrong Residential Services Board Member
- Pittsburgh Colleague Network Monthly Meeting
- Pittsburgh Cluster Assembly Planning Committee
- Unitarian Universalist PA Legislative Advocacy Network Board Member



First UU Organizational Chart





GE & Martin's Gift Cards MARTIN'S Fundraising Program

2013 INCOME:

\$2,625 Giant Eagle

\$913 Martin's

\$3,538 TOTAL

1/1/14 – 9/30/14 INCOME:

\$1,999 Giant Eagle

\$523 Martin's

\$2,522 TOTAL

We can match the 2013 - \$1,016 plus more starting today?

TOGETHER, WE CAN DO BETTER! WE HAVE THE CARDS! PLEASE PLAN YOUR SHOPPING & GIFT-GIVING WITH US BEFORE HEADING TO THE STORES! *Check out the amazing variety of retail and restaurant cards available at GE & Martin's.*

You may always after Sunday Service and during normal office hours at the church.

You may stop by Rev. Joan's home during the week. Just call & your pick-up can be arranged.

Endowment Summary

- **Simple Gifts Program** donation totaled \$1,205
- **Original Gift:** \$416,652.50
- **Grant** given to support ministry and building projects: \$65,000 has been spent with the last expenditure of \$1,793.30 for ministry 2015 & \$65 in building.
- **2014 Distributions included:**
 - \$2,000 Center for Community Growth Film Festival
 - \$3,000 for parking lot upgrade
 - \$1,000 for youth & young adults to attend UU conferences/retreats
 - \$2,000 for Food for Mind and Spirit
 - \$3,900 Association Dues

Projected Income

Pledges	\$ 76,500 (\$5,000 increase from last year)
Endowment	\$ 15,735* Added to Operating Budget
Building Rental	\$ 4,000
Fund Raising	\$ 8,000 (\$4,000 less than last year)
Endowment Ministry	\$ 1,793 (from original ministry grant – final payment)
Collection Basket -	\$ 2,600
TOTAL INCOME -	\$108,628

Projected Expenses

- Association Due \$ 6,090
- Committees \$ 4,980
- Facilities & Utilities \$ 12,051
- Leadership Dev. \$ 325
- Operations \$ 3,060
- Personnel:
 - Ministry \$ 59,989 (10% health cost paid by minister)
 - DRE \$ 10,250 (\$9,500 salary @\$12/hr.; \$750 prof. dev.)
 - Admin Assistant \$ 7,662 (includes \$.25/hr. increase in salary)
 - Nursery Care \$ 1,520
 - Choir Director \$ 2,000
 - Payroll Taxes \$ 1,200
- **TOTAL EXPENSES: \$108,628**

Association Dues/Person / Year :

- \$60 – UUA per person
- \$24.50 - OMD per person
- \$ 1 – Gr. Pittsburgh Cluster of UU churches
- \$ 1 – UU PA Legislative Advocacy Network
- **\$86.50 Yearly Dues Total**



OMD Up-Close E-News



We Stand on the Side of Love

WILL YOU?

www.StandingontheSideofLove.org



2014 Pledging Information

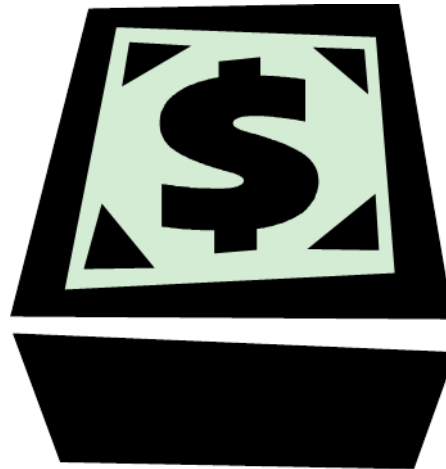
60 Pledge Units

10 give over \$3,000

12 give between \$1,000 - \$2,999

28 give below \$999

10 units gave 0 last year



*A pledge unit is an individual or a family.

Pledge Card



Inspire-Care-Act Together!
First Unitarian Universalist Church of Indiana
2015 Annual Pledge Campaign

Name(s): _____

Last Year's (2014) Pledge: \$ _____

I/We pledge to contribute to the First UU Church in 2015 as follows:

_____ *Weekly;* _____ *Monthly;* _____ *Quarterly;* _____ *Annually*

For a total sum of \$ _____

I will attend a Town Meeting (all meetings at the church):

_____ *Tuesday, Oct. 21 at Noon* _____ *Thursday, Oct. 23 at 7 p.m.*

_____ *Saturday, Oct. 25 at 10 a.m.* _____ *Sunday, Oct. 26 at Noon*

_____ *I would prefer to have a one-on-one visit with a Canvasser.*

Contributor Signature

Contributor Signature

Please leave your pledge form with us today!!
Or complete your card and mail it back to the church office by Friday, October 31.

It is understood that this pledge may be revised by the contributor(s) if circumstances make it necessary
by contacting the Board of Trustees President or Rev. Joan



Inspire, Care, & Act Together!



First Unitarian Universalist Church of Indiana